

NetUP.tv Lite user manual

Android IPTV from NetUP



NETUP.TV LITE APPLICATION

The NetUP.tv Lite application runs on Android-based IP set-top boxes. It provides the functionality of browsing the TV program and viewing the fixed list of TV channels.

Installation and setup

The application may be downloaded at <http://www.netup.tv/downloads/netup-iptv-lite.2.2.2.apk>.

Before you start the application, prepare the list of channels. It must be organized in an XML file of the following form:

```
<?xml version="1.0" encoding="UTF-8"?>
<channelLists>
  <timestamp>1294654620</timestamp>
  <channelList>
    <name>TV channels</name>
    <channel>
      <type>tv</type>
      <name>Channel 1</name>
      <quality>SD</quality>
      <address>udp://228.110.1.1:1234</address>
      <id>7c1342b67c4ed50f361aa045acf0e4f9</id>
      <encrypted>no</encrypted>
      <iconUrl/>
    </channel>
    <channel>
      <type>tv</type>
      <name>Channel 2 (228.110.1.2) </name>
      <quality>HD</quality>
      <address>udp://228.110.1.2:1234</address>
      <id>049698ebbfdb7a783900b3ac58393ff</id>
      <encrypted>no</encrypted>
      <iconUrl/>
    </channel>
    <channel>
      <type>tv</type>
      <name>Channel 3 (228.110.1.3) </name>
      <quality>SD</quality>
      <address>udp://228.110.1.3:1234</address>
      <id>8cdf078b67542382c871e1fd46b998e</id>
      <encrypted>yes</encrypted>
    </channel>
  </channelList>
</channelLists>
```

```

    <iconUrl/>
  </channel>
</channelList>
<channelList>
  <name>Radio</name>
  <channel>
    <type>radio</type>
    <name>Radio 1</name>
    <quality></quality>
    <address>udp://224.200.1.31:1234</address>
    <id>r1</id>
    <encrypted>no</encrypted>
    <iconUrl/>
  </channel>
</channelList>
</channelLists>

```

The `address` tag must contain multicast address of the channel.

Channel logo may be specified in the optional tag `iconUrl`. It must be in a form of PNG file with size 96 by 96 pixels, suitable for viewing against dark background.

Channel identifier (the `id` tag) is used for the sole purpose of linking to the program guide file and may be assigned arbitrarily.

The list of channels may be located either on the STB itself or on some remote network resource. Its URL in the application settings (see **Settings** on page 6) must be specified as local or remote accordingly:

```

file:///mnt/sdcard/sdcard/s.xml
http://mw.iptv/s.xml

```

Besides the list of channels, NetUP.tv Lite may use an external XML file with the program guide. Here is an example:

```

<?xml version="1.0" encoding="UTF-8"?>
<programGuide>
  <channel>
    <id>7c1342b67c4ed50f361aa045acf0e4f9</id>
    <program>
      <since>1314093600</since>
      <duration>600</duration>
      <title>News</title>
      <info>breaking news</info>
    </program>
  </channel>
</programGuide>

```

```
<program>
  <since>1314094200</since>
  <duration>1800</duration>
  <title>Two and a Half Men</title>
  <info/>
</program>
</channel>
<channel>
  <id>049698ebbfdb7a783900b3ac58393ff</id>
  <program>
    <since>1314093600</since>
    <duration>1800</duration>
    <title>Friends</title>
    <info/>
  </program>
  <program>
    <since>1314095400</since>
    <duration>1800</duration>
    <title>Everybody Loves Raymond</title>
    <info/>
  </program>
  <program>
    <since>1314097200</since>
    <duration>1310</duration>
    <title>The Big Bang Theory</title>
    <info/>
  </program>
</channel>
</programGuide>
```

Startup



NetUP.tv Lite

To start NetUP.tv Lite, select and press its icon on the Android home screen.

The application may launch automatically on STB startup, if the corresponding option is set (see **Settings** on page 6).

Upon startup the application shows its TV screen (see **TV channels** on page 5). On first launch, before the addresses of the auxiliary files are specified (see **Settings** on page 6), the list may appear empty.

Common features

The semi-transparent menu is superimposed over the playing content or the standard background. It may be summoned by pressing **Back** button of the remote control panel, and vanishes automatically once a new TV channel is selected and starts playing.

The contents of the menu is placed at the left. As a rule, the remote control buttons **Up** and **Down** switch between menu items, while **Right** and **Left** are used to switch between alternative screens (wherever applicable). To open the selected menu item, press **OK**. To return to the upper level, press **Back**.

Textual information, whenever required, may be entered by means of the Android virtual keyboard.

TV channels

TV channels screen lists all available channels.



Figure 1. TV channels screen.

The program guide, whenever available, is shown in the right part of the screen. Program names that would not fit into the corresponding table cells are scrolled automatically for convenient viewing.

Upon pressing **OK** the TV program vanishes and the selected channel starts playing. The list of channels on the left remains visible and allows switching between channels by pressing **Up** and **Down**. When not used for some time, it vanishes too.

Pressing **Menu** while playing a TV channel with multiple audio tracks produces an interface to switch between them.

Radio

Switching between the **Radio** and **TV channels** screens is done by pressing **Right** and **Left**. The **Radio** screen contains the list of radio channels with their program guide. Channel selection and playing are done in the same fashion as with the TV channels.

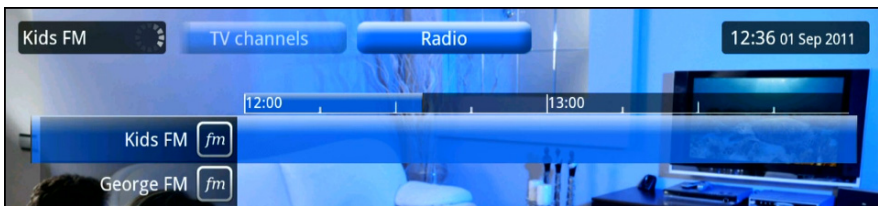


Figure 2. Radio screen.

Settings

Pressing **Menu** while in the menu opens the popup settings window.

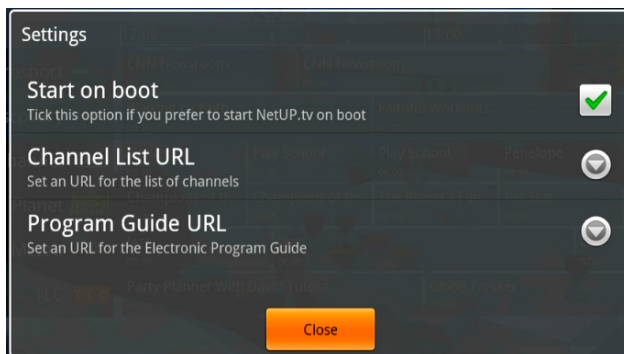


Figure 3. Settings popup window.

The meaning of the settings is as follows:

- **Start on boot** makes the application launch automatically on STB startup;
- **Channel List URL** is the remote or local address of the XML file containing the list of channels (see **Installation and setup** on page 2);
- **Program Guide URL** is the address of the program guide XML file.



Phone: +7 495 510 1025

Fax: +7 499 783 0080

Address: Russia, Moscow, Ulofa Palme str. 1, sect. 7

Post: 119311, Russia, Moscow, P.O. Box #87

E-mail: info@netup.tv

Web: <http://netup.tv>
