

# IPTV for Hospitality



**Complete range of IPTV equipment**

**Interface to hotel PMS**

**Easy to set up & use**



Web: [www.netup.tv](http://www.netup.tv)  
Email: [info@netup.tv](mailto:info@netup.tv)  
Tel: +7 495 510-1025

# Core Devices

## IPTV Combine 8x



IPTV Combine 8x is a 1U rack-mount all-in-one IPTV headend supporting up to 1000 end users that is optimal for for small & medium Internet service providers or for initial/pilot setup in large networks.

### Includes:

- ✓ IPTV middleware
- ✓ IPTV billing
- ✓ DVB to IP gateway
- ✓ VoD server

### Inputs & Outputs:

- ✓ 8 x DVB-S2/T2/C2, ATSC, ISDB-T slots
- ✓ 8 x Common Interface slots
- ✓ 4 x 1 Gb Ethernet ports
- ✓ serial console
- ✓ 2 x USB
- ✓ IP stream

### Performance:

- ✓ up to 1000 users
- ✓ receive & decrypt 8 transponders
- ✓ 50 concurrent VoD streams
- ✓ 1 TB HDD for internal video storage

## IPTV Combine 8x Hotel



IPTV Combine 8x Hotel is a special configuration of IPTV Combine 8x intended for the hospitality sector. Rack-mount all-in-one IPTV headend intended for medium and large hotels, cruise ships, and hospitals.

### Includes:

- ✓ IPTV middleware & billing
- ✓ DVB to IP gateway
- ✓ VoD server
- ✓ interface to hotel software supporting FIAS v.2 protocol

### Supported hotel software:

- ✓ Fidelio Suite 6, 7 and 8
- ✓ OPERA
- ✓ Shelter
- ✓ any other with FIAS v.2 protocol support

### Power & dimensions:

- ✓ 19" rack-mount case, 1U height
- ✓ WxHxD: 440x44x410 mm
- ✓ weight: 8.8 kg
- ✓ power: 90 ~ 264 Volts, 47 ~ 63 Hz

### Hospitality features:

- ✓ welcome message on check-in
- ✓ hotel info page
- ✓ auto posting IPTV services
- ✓ hotel bill view
- ✓ express checkout
- ✓ messages from reception
- ✓ room status change via TV (dirty/clean) for housekeeping
- ✓ room service (shop) on TV

### Inputs & Outputs:

- ✓ 8 x DVB-S2/T2/C2, ISDB-T
- ✓ 8 x CI slots
- ✓ 4 x 1 Gb Ethernet ports
- ✓ serial console
- ✓ 2 x USB

### Performance:

- ✓ up to 1000 users
- ✓ receive & decrypt 8 DVB transponders
- ✓ 50 concurrent VoD streams
- ✓ 1 TB HDD for internal video storage

# Optional Components

## DVB to IP Gateway 8x



A rack-mount device that can be added to the IPTV setup to increase the number of TV channels taken from DVB sources.

### Inputs & Outputs:

- ✓ 8 x DVB-S2/T2/C2 tuners
- ✓ 8 x CI slots
- ✓ 4 x 1 Gb Ethernet ports
- ✓ admin Web interface

### Dimensions & Power:

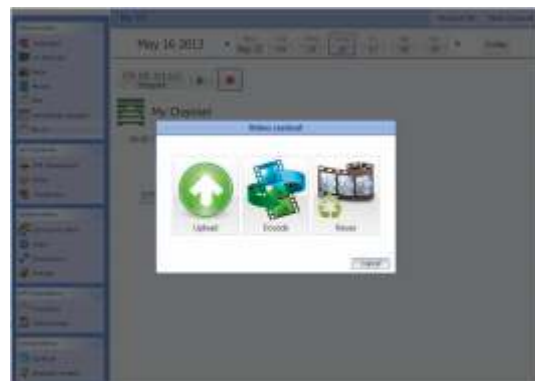
- ✓ 19" rack-mount case, 1U height
- ✓ dimensions (WHD): 440 x 44 x 410 mm
- ✓ weight: 8.8 kg
- ✓ power supply: 90 ~ 264 Volts, 47 ~ 63 Hz

## MyTV Server

A software module that can be added to the core IPTV device to create custom TV channels by playing them out from files.

### Performance:

- ✓ up to 10 concurrent streams in Visual IPTV Combine or IPTV Combine 8x
- ✓ up to 100 concurrent streams in a standalone server



## Software Transcoder



A software module that can be added to Visual IPTV Combine, IPTV Combine 8x Hotel or DVB to IP gateway 8x in order to perform on-the-fly streams transcoding to H.264. It also allows to combine TV channels into 3x3, 4x4 or 5x5 grid view (mosaic) for preview and monitoring purposes.

### Performance:

- ✓ HD1080 - 8 channels
- ✓ HD720 - 20 channels
- ✓ SD576 - 40 channels

in Visual IPTV Combine, IPTV Combine 8x or DVB to IP gateway 8x. Can be higher in a standalone server.

## Timeshift / Catch up TV Server

A software server that can be added to the IPTV setup to enable TV on Demand, Pause Live TV, and NPVR features. The software can be installed on a standalone server with high HDD capacity and performance.

### Performance:

- ✓ up to 100 simultaneous input/output streams
- ✓ unlimited HDD storage space



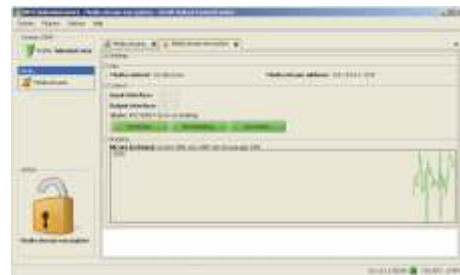
# Optional Components

## IP CAS/DRM

A software system that can be added to the IPTV setup in order to protect live streams (TV channels) against unauthorized access. The server part of the system is installed on a standalone server, client part is installed to IP set-top boxes.

### Features:

- ✓ up to 100 concurrent streams encryption
- ✓ industry-standard AES algorithm used with dynamic keys
- ✓ full HD support



## HDMI Encoder 8x

A rack-mount device that can be added to the IPTV setup for live encoding of HDMI signal.

### Features:

- ✓ H.264 encoding
- ✓ 8 channels per device
- ✓ up to HD1080@60P
- ✓ 0.8 Mbps - 19 Mbps per channel
- ✓ WxHxD: 440x44.5x410 mm
- ✓ Weight: 7 kg, 1U



## MPEG-2 Encoder 8x

A rack-mount device that can be added to the IPTV setup for live encoding of analog A/V signal.

### Features:

- ✓ MPEG-2 encoding
- ✓ 8 channels per device
- ✓ 0.8 Mbps - 20 Mbps per channel
- ✓ WxHxD: 482x44x455 mm
- ✓ Weight: 4 kg, 1U



## Web Player

Web Player is a software that allows to access the IPTV services by web browser from user's PC or laptop.

The software can run on most Windows and Linux distributions.

### Key features:

- ✓ TV, EPG, VoD, TVoD, etc.
- ✓ Windows 2000/XP/7
- ✓ Linux

## Android IP STB

A compact and high performance IP STB based on quad core ARM CPU and running Android 6.0.

### Features:

- ✓ CPU: Quad Core ARM Cortex-A53 CPU
- ✓ GPU: Mali 450 GPU
- ✓ flash memory: 8GB EMMC
- ✓ RAM: 1GB DDR3
- ✓ 2 x USB, 1 x Micro SD, Rj45
- ✓ 802.11 b/g/n Wi-Fi



## Mobile Application

NetUP mobile app for Android and iOS brings more fun into your viewers' pastimes and allows them to use IPTV and OTT services on-the-go. Coupled with NetUP Middleware this app becomes a great instrument of making profit through selling video content, advertising etc. Application supports full range of IPTV services: Live TV, Time-shifted TV and Video-on-Demand.

### Key features:

- ✓ TV, EPG, VoD, TVoD, etc.
- ✓ Web browsing
- ✓ theme customization
- ✓ multiple languages support



Web: [www.netup.tv](http://www.netup.tv)  
Email: [info@netup.tv](mailto:info@netup.tv)  
Tel: +7 495 510-1025